

How to Import Course Files in D2L

1. Click and download the Knowledge Quest Course Files on the Knowledge Quest Website (qwest.ccd.edu).
2. Go to the D2L course shell into which you plan to import these files
3. Click on “Edit Course.”



4. Click on “Import/Export/Copy Components”



5. Check the “Import Components” button. Then click “Choose File.”

My Home > CCR09402C Studio 12... ▾

COMMUNITY COLLEGE OF DENVER ONLINE

Attendance Classlist Content Discussions Drop

Import/Export/Copy Component

What would you like to do?

Copy Components from Another Org Unit

Protected Resources:

Include protected resources

Course to Copy:

Search for offering

Parent Template of Current Offering

Protected Resources:

Include protected resources

Export Components

Course Files: Include course files in the export

Import Components

Select a component source:

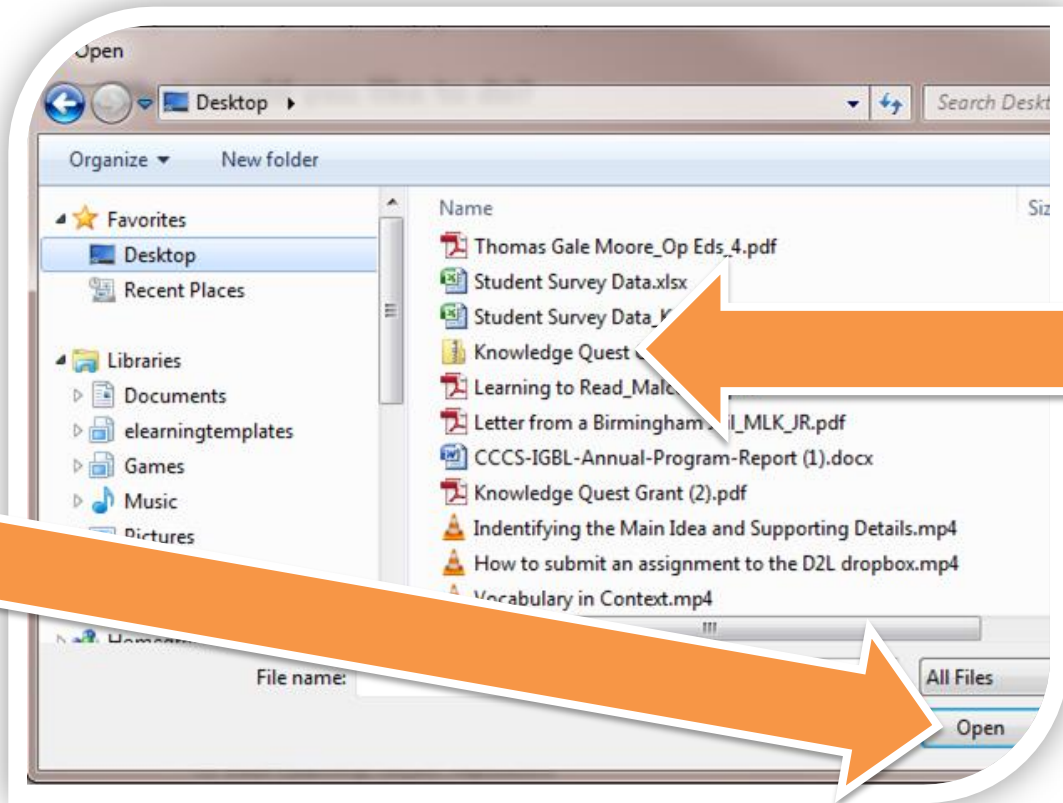
from Learning Object Repository

from a File

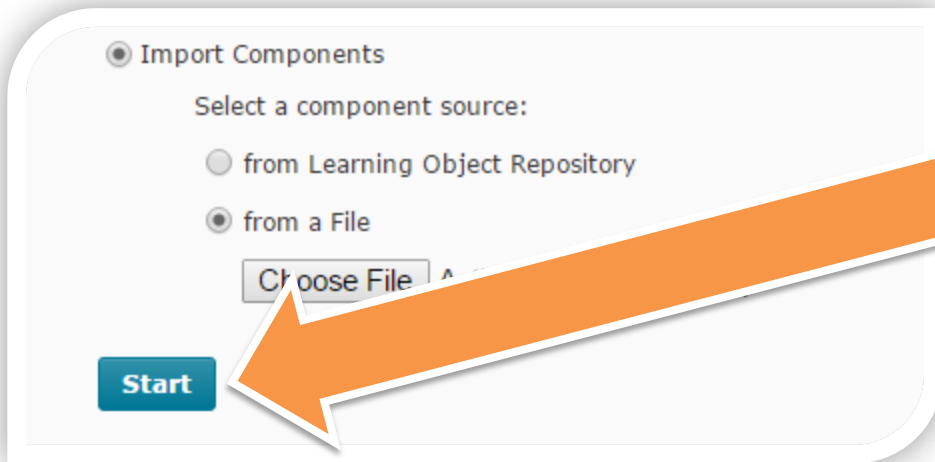
Choose File

Start

6. Find the zipped file of the Knowledge Quest course files and click “Open”

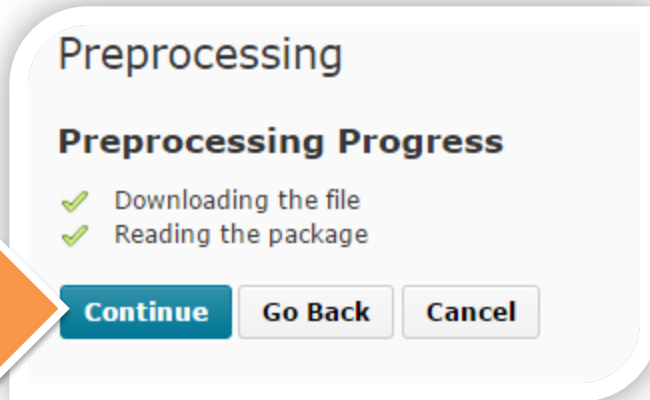


7. Click “Start.”

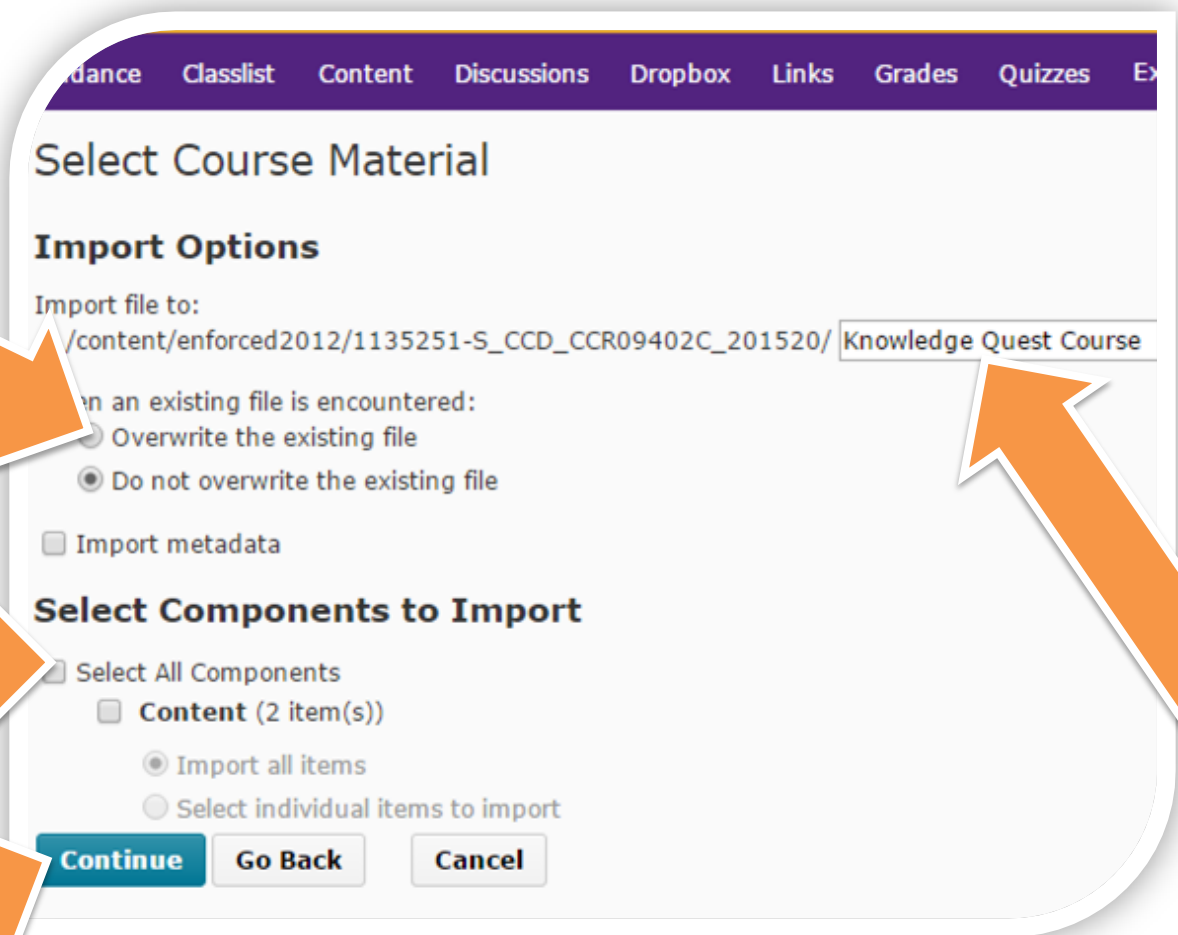


Note: This is a very large file, and it will take a long time to import.

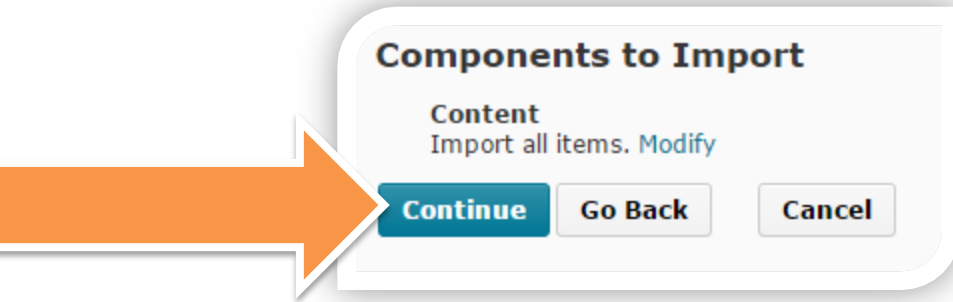
8. Click "Continue."



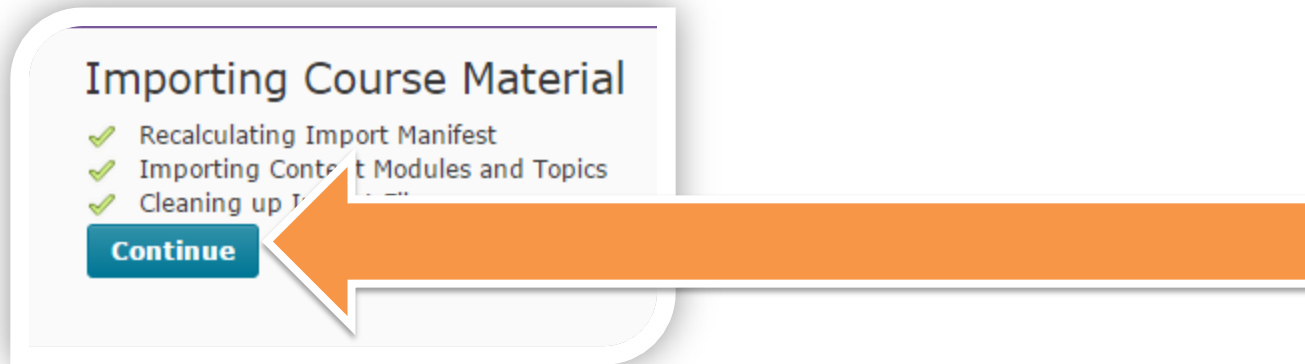
9. Identify the location where you want to import the files. Type "Knowledge Quest Course." Click "the "Import Metadata" and "Select all Components" button. Then click "Continue."



10. Click "Continue."



11. Click "Continue."



12. Yay! You're done. You can view all the materials in the "Content" tab of D2L.